

2026-27 SEASON CALENDAR



August 2026

Bluey's Big Play
Tuesday, August 25 • 6 p.m.
SEASON ADD-ON

September 2026

Better Than Ezra & Vertical Horizon
Friday, September 11 • 7 p.m.
AMPHITHEATRE SERIES

Jason Isbell and the 400 Unit
Friday, September 25 • 7 p.m.
AMPHITHEATRE SERIES

"Weird Al" Yankovic: *Bigger & Weirder Tour*
Tuesday, September 29 • 7 p.m.
AMPHITHEATRE SERIES

October 2026

Jamey Johnson: *Traveling Truebadour Tour*
Thursday, October 1 • 7 p.m.
CELEBRITY SERIES

Gravity & Other Myths: *Ten Thousand Hours*
Tuesday, October 6 • 7 p.m.
DANCE & MOVEMENT SERIES

Clint Black & Midland
Friday, October 16 • 7 p.m.
AMPHITHEATRE SERIES

Clue
Monday, October 19 • 7 p.m.
Tuesday, October 20 • 7 p.m.
Wednesday, October 21 • 7 p.m.
BROADWAY SERIES

Cheyenne Jackson: *That Guy from That Thing*
Monday, October 26 • 7 p.m.
Tuesday, October 27 • 7 p.m.
CABARET SERIES*

November 2026

Ying Quartet
Tuesday, November 10 • 7 p.m.
CHAMBER MUSIC SERIES*

The Best of The Second City!
Thursday, November 12 • 7 p.m.
CABARET SERIES*

A Beautiful Noise
Tuesday, November 17 • 7 p.m.
Wednesday, November 18 • 7 p.m.
Thursday, November 19 • 7 p.m.
BROADWAY SERIES

December 2026

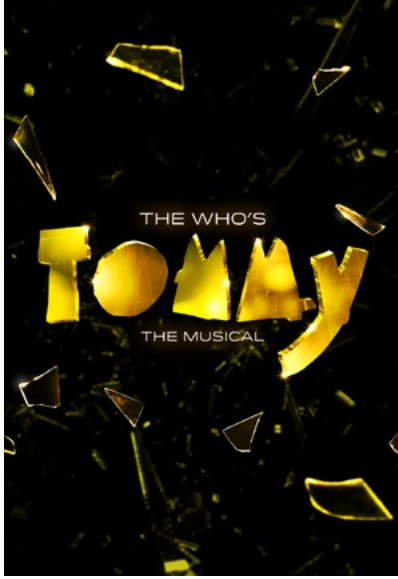
Holiday Concert
Jessica Vosk: *Sleigh*
Tuesday, December 8 • 7 p.m.
CELEBRITY SERIES

Holiday Concert
Drew and Ellie Holcomb's
Neighborly Christmas
Thursday, December 10 • 7 p.m.
CELEBRITY SERIES

January 2027

Renée Fleming
Voice of Nature: The Anthropocene
Wednesday, January 20 • 7 p.m.
CELEBRITY SERIES

2026-27 SEASON CALENDAR



The Who's Tommy
Friday, January 22 • 7 p.m.
Saturday, January 23 • 2 p.m. • 7 p.m.
BROADWAY SERIES

February 2027

An Evening with Michael Feinstein
featuring Kelli O'Hara
Thursday, February 4 • 7 p.m.
CELEBRITY SERIES

Jeremy Denk, PIANO
Monday, February 8 • 7 p.m.
CHAMBER MUSIC SERIES*

Isidore Quartet and Jeremy Denk, PIANO
Tuesday, February 9 • 7 p.m.
CHAMBER MUSIC SERIES*

Audra McDonald
Friday, February 26 • 7 p.m.
CELEBRITY SERIES

March 2027

Cirque Mechanics: *Tilt!*
Tuesday, March 2 • 7 p.m.
DANCE & MOVEMENT SERIES

Pilobolus: *Trips*
Thursday, March 18 • 7 p.m.
DANCE & MOVEMENT SERIES

Richard Thomas in *Mark Twain Tonight!*
Tuesday, March 23 • 7 p.m.
CELEBRITY SERIES

April 2027

World Ballet Company: *Swan Lake*
Friday, April 2 • 7 p.m.
DANCE & MOVEMENT SERIES

Golden Age
Erin Morley, SOPRANO and
Lawrence Brownlee, TENOR
Wednesday, April 14 • 7 p.m.
CHAMBER MUSIC SERIES*

Time for Three
Friday, April 23 • 7 p.m.
CABARET SERIES*

May 2027

One Night of Queen
A Tribute by Gary Mullen & The Works
Thursday, May 6 • 7 p.m.
AMPHITHEATRE SERIES

Beetlejuice: The Musical
Wednesday, May 19 • 7 p.m.
Thursday, May 20 • 7 p.m.
BROADWAY SERIES

PLEASE NOTE
Cabaret Series and Chamber Music Series performances will be presented in the Studio Theatre; Amphitheatre Series performances will be presented in the Ham Amphitheatre; all other series performances will be presented in the Woltosz Theatre.

**GOGUE
PERFORMING
ARTS
CENTER**
AT AUBURN UNIVERSITY



Contact the box office today!

334.844.TIXS (8497) • GOGUECENTERTICKETS.AUBURN.EDU

All series, artists, performances, dates and times listed are subject to change. For the most accurate and up-to-date performance schedule, please visit our website.

*Tickets for season add-ons and performances in the 2026-27 Cabaret and Chamber Music Series are not included with a standard season subscription. Add-on tickets must be purchased separately. Tickets for Cabaret and Chamber Music Series performances may be purchased as separate series subscriptions or individually.