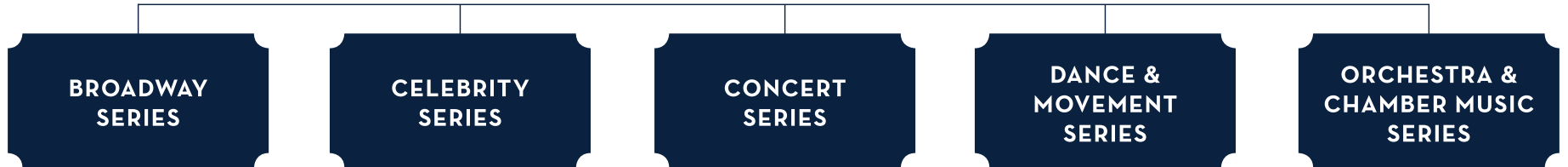


ANNUAL TITLE SPONSOR



Sponsors at the Celebrity level and higher can name an artist engagement, performance or series. Available naming opportunities are outlined above in orange.  
To learn more about available sponsorship opportunities, contact Carrie Collett, development officer, at 334.844.7945 or [carriecollett@auburn.edu](mailto:carriecollett@auburn.edu).

## BROADWAY SERIES



*Rudolph the Red-Nosed Reindeer:  
The Musical*

PERFORMANCE

*Laura & Kerry Bradley*



*Beautiful:  
The Carole King Musical*

PERFORMANCE

**Momma G's  
Deli** 



*Rodgers and Hammerstein's  
OKLAHOMA!*

PERFORMANCE

*Cheri & David Paradice*



*Fiddler on the Roof*

PERFORMANCE

*Laura & Kerry Bradley*



*Anastasia*

PERFORMANCE

*Rick N. White*

Sponsors at the Celebrity level and higher can name an artist engagement, performance or series. Available naming opportunities are outlined above in orange.  
To learn more about available sponsorship opportunities, contact Carrie Collett, development officer, at 334.844.7945 or [carriecollett@auburn.edu](mailto:carriecollett@auburn.edu).

## CELEBRITY SERIES

GOLD SPONSOR



**Patti LaBelle**

PERFORMANCE

*Carolyn & Rick Salanitri*



**Jeanne Robertson**

PERFORMANCE

*Linda Bonds Peterson*



**Boz Scaggs**

PERFORMANCE

AUBURN  
OPELIKA  
t o u r i s m



**The Righteous Brothers:  
Bill Medley and Bucky Heard**

PERFORMANCE

*Susan & Jim McKee*



**Lauren Patten**

PERFORMANCE

BRONZE SPONSOR



**Anais Mitchell +  
Bonny Light Horseman**

ARTIST'S ENTIRE ENGAGEMENT

SILVER SPONSOR

PERFORMANCE

*Diane & Darryl Rosser*

MASTER CLASS

CELEBRITY  
SPONSOR

Sponsors at the Celebrity level and higher can name an artist engagement, performance or series. Available naming opportunities are outlined above in orange.  
To learn more about available sponsorship opportunities, contact Carrie Collett, development officer, at 334.844.7945 or [carriecollett@auburn.edu](mailto:carriecollett@auburn.edu).

## CONCERT SERIES

GOLD SPONSOR



**Del McCoury Band**



**Candi Staton**



**Edgar Meyers, Mike Marshall,  
Sam Bush and the  
George Meyer Ensemble**



**Branford Marsalis Quartet**

PERFORMANCE



ARTIST'S ENTIRE ENGAGEMENT

SILVER SPONSOR

PERFORMANCE

BRONZE SPONSOR

WORKSHOP

CELEBRITY  
SPONSOR

ARTIST'S ENTIRE ENGAGEMENT

SILVER SPONSOR

PERFORMANCE

*The AUBURN Villager*

MASTER CLASS

*Jon & Rachel Hyink*

ARTIST'S ENTIRE ENGAGEMENT



PERFORMANCE

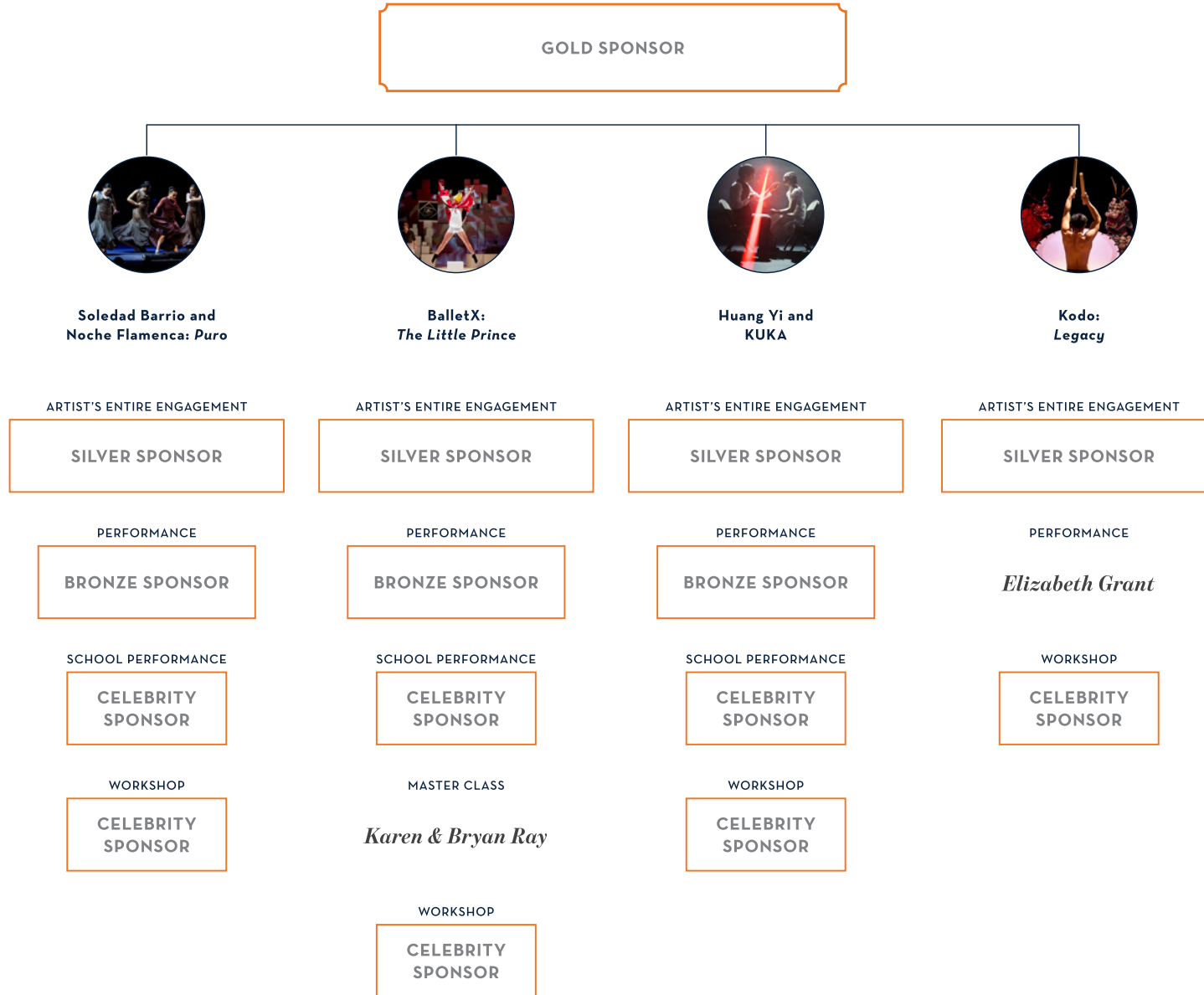
BRONZE SPONSOR

WORKSHOP



Sponsors at the Celebrity level and higher can name an artist engagement, performance or series. Available naming opportunities are outlined above in orange. To learn more about available sponsorship opportunities, contact Carrie Collett, development officer, at 334.844.7945 or [carriecollett@auburn.edu](mailto:carriecollett@auburn.edu).

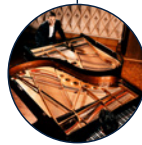
## DANCE & MOVEMENT SERIES



Sponsors at the Celebrity level and higher can name an artist engagement, performance or series. Available naming opportunities are outlined above in orange. To learn more about available sponsorship opportunities, contact Carrie Collett, development officer, at 334.844.7945 or [carriecollett@auburn.edu](mailto:carriecollett@auburn.edu).

## ORCHESTRA & CHAMBER MUSIC SERIES

GOLD SPONSOR



**Piano Battle**



**Les Violons du Roy  
with Jeremy Denk, piano**

ARTIST'S ENTIRE ENGAGEMENT

SILVER SPONSOR

PERFORMANCE

BRONZE SPONSOR

ARTIST TALK

CELEBRITY  
SPONSOR

ARTIST'S ENTIRE ENGAGEMENT

SILVER SPONSOR

PERFORMANCE

BRONZE SPONSOR

MASTER CLASS

CELEBRITY  
SPONSOR

Sponsors at the Celebrity level and higher can name an artist engagement, performance or series. Available naming opportunities are outlined above in orange.  
To learn more about available sponsorship opportunities, contact Carrie Collett, development officer, at 334.844.7945 or [carriecollett@auburn.edu](mailto:carriecollett@auburn.edu).

## INAUGURAL SERIES



**Sierra Hull**

PERFORMANCE

**BRONZE SPONSOR**



**Alfredo Rodríguez and  
Pedrito Martínez Duo**

PERFORMANCE

**BRONZE SPONSOR**



**Air Play by Acrobuffos**

ARTIST'S ENTIRE ENGAGEMENT

**SILVER SPONSOR**

PERFORMANCE

*In Honor of  
Pete Smith & Hank Smith*

SCHOOL PERFORMANCE



Sponsors at the Celebrity level and higher can name an artist engagement, performance or series. Available naming opportunities are outlined above in orange. To learn more about available sponsorship opportunities, contact Carrie Collett, development officer, at 334.844.7945 or [carriecollett@auburn.edu](mailto:carriecollett@auburn.edu).